

# PRODUCT PREVIEW

## 3.5" 320 x 240 TFT w/ Res. TP

**TFT**

Liquid Crystal Display

### Small Size TFT

The PDI0350CZG-T is a TFT module with 320 x 240 resolution and touch panel. This product offers improved contrast, color saturation and response time over CSTN products.

### Increased Display Brightness

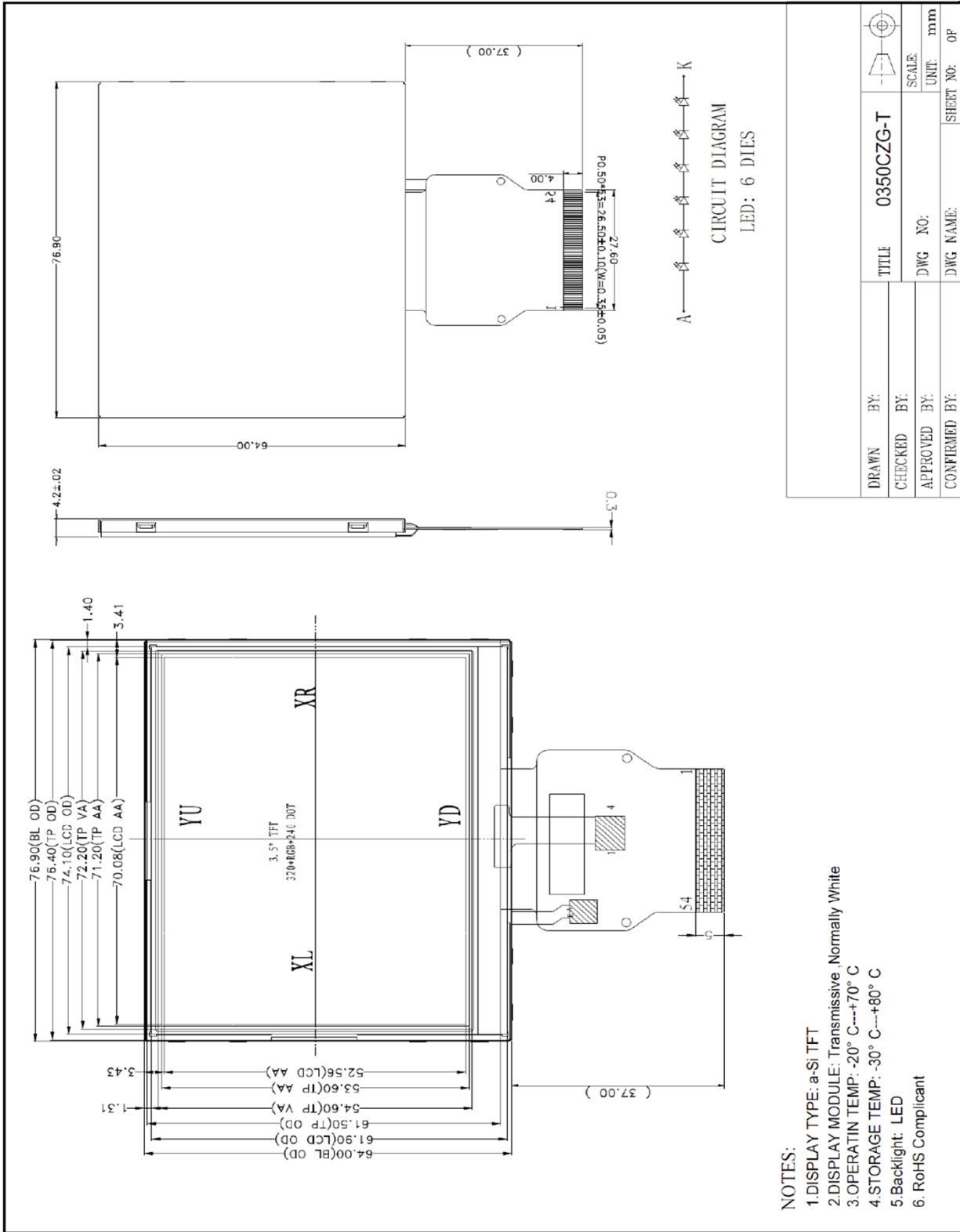
Display Brightness is a key factor for design engineers when selecting a display that must vividly show images and alphanumeric data. The TFT cell is manufactured using high aperture panel technology, high transmittance color filters and high transmission polarizers. The result is a clear and extremely bright display.

## SPECIFICATIONS

### MODULE

|                       |                                |
|-----------------------|--------------------------------|
| Part Number           | PDI0350CZG-T                   |
| Overall Dimensions    | 76.90(w) x 64.00(h) x 4.20(d)  |
| Backlight System      | LED                            |
| Display Type          | a-Si TFT                       |
| Format                | 320(RGB) x 240                 |
| Display Mode          | Transmissive, Normally White   |
| Active Area           | 71.20(w) x 53.60(h)            |
| Viewing Cone          | 50 / 70 / 70 / 70 (T, B, L, R) |
| Contrast Ratio        | 370:1                          |
| Operating Temperature | -20° to 70°C                   |
| Interface             | 24 bit RGB                     |
| Brightness            | 260 nits                       |





NOTES:

- 1.DISPLAY TYPE: a-Si TFT
- 2.DISPLAY MODULE: Transmissive ,Normally White
- 3.OPERATING TEMP: -20° C---+70° C
- 4.STORAGE TEMP: -30° C---+80° C
- 5.Backlight: LED
6. RoHS Compliant

|               |           |           |           |    |
|---------------|-----------|-----------|-----------|----|
| DRAWN BY:     | TITLE     | 0350CZG-T | SCALE:    | mm |
| CHECKED BY:   | DWG NO:   |           | UNIT:     | mm |
| APPROVED BY:  | DWG NAME: |           | SHEET NO: | 0F |
| CONFIRMED BY: |           |           |           |    |

