

PRODUCT PREVIEW

10.4" 800 x 600 TFT

TFT

Liquid Crystal Display

Small Size TFT

The PDI1040FIG is a TFT with 800 x 600 resolution. This product offers improved contrast, color saturation and response time over CSTN products.

Increased Display Brightness

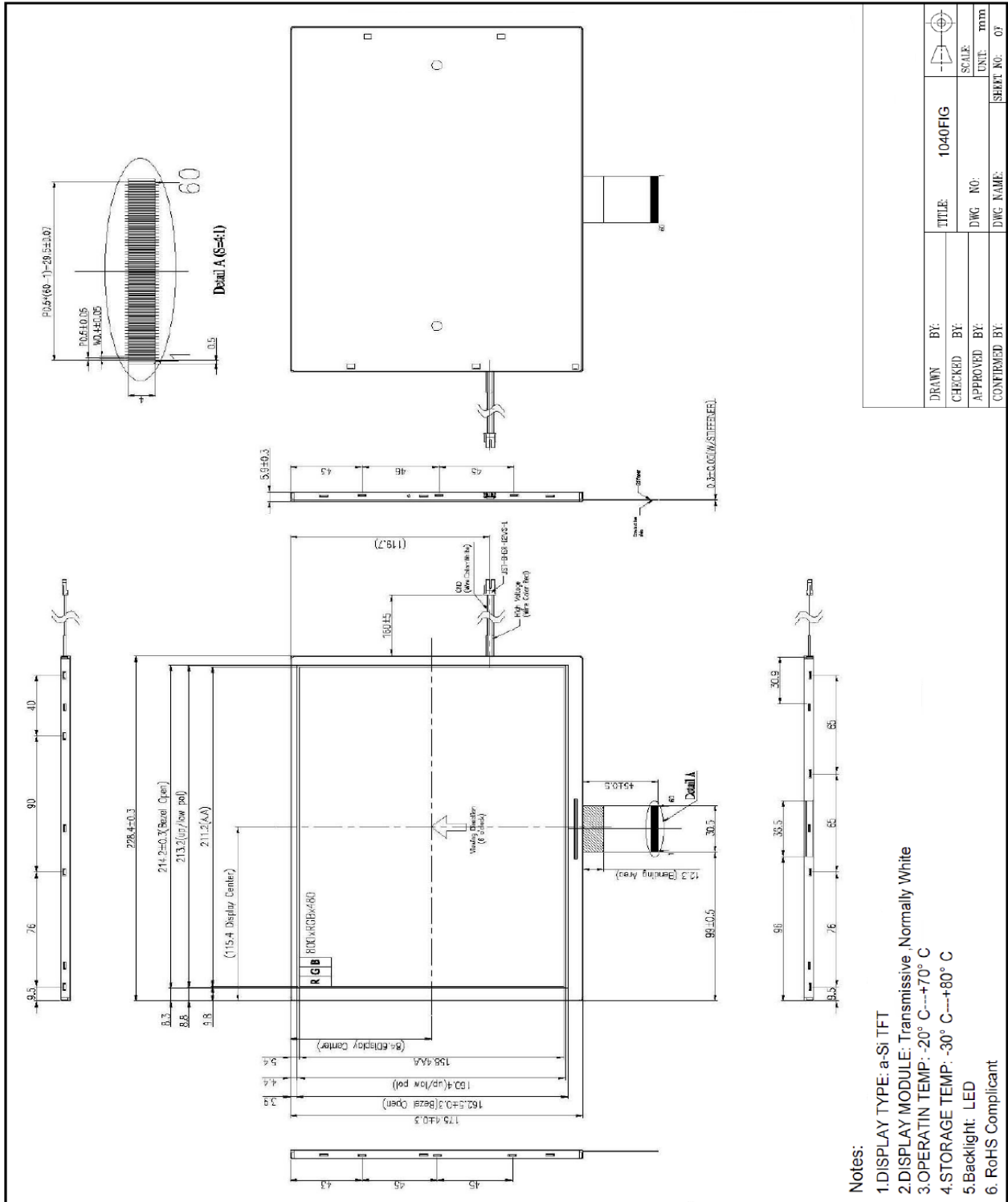
Display Brightness is a key factor for design engineers when selecting a display that must vividly show images and alphanumeric data. The TFT cell is manufactured using high aperture panel technology, high transmittance color filters and high transmission polarizers. The result is a clear and extremely bright display.

SPECIFICATIONS

MODULE

Part Number	PDI1040FIG
Overall Dimensions	228.40(w) x 175.40(h) x 5.90(d)
Backlight System	LED
Display Type	a-Si TFT
Format	800(RGB) x 600
Display Mode	Transmissive, Normally White
Active Area	211.20(w) x 158.40(h)
Viewing Cone	50 / 60 / 70 / 70 (T, B, L, R)
Contrast Ratio	500:1
Operating Temperature	-20° to 70°C
Interface	24 bit RGB
Brightness	250 nits





Notes:

1. DISPLAY TYPE: a-Si TFT
2. DISPLAY MODULE: Transmissive, Normally White
3. OPERATING TEMP: -20° C---+70° C
4. STORAGE TEMP: -30° C---+80° C
5. Backlight: LED
6. RoHS Compliant

DRWN BY:	TITLE:	1040FIG	SCALE:	UNIT:	mm	SHEET NO.:	07
CHECKED BY:	DWG NO.:						
APPROVED BY:	DWG NAME:						
CONFIRMED BY:							

