

PRODUCT PREVIEW

128 x 112 Monochrome

SPECIFICATIONS

MODULE

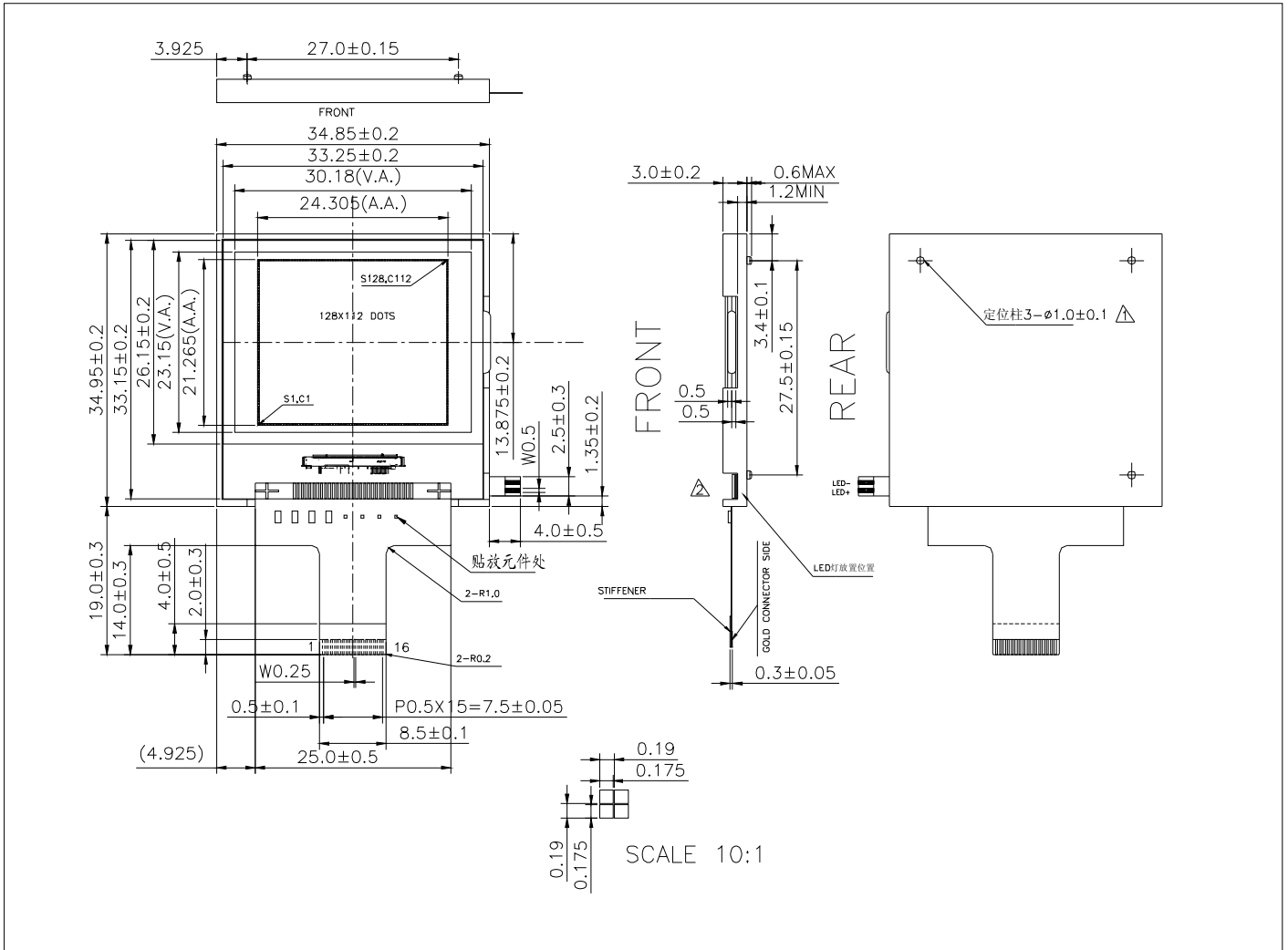
Part Number	G-12811205G-VB
Format	128 Columns by 112 Rows
Controller	ST7528
Overall Dimensions	34.9mm x 35.0mm x 3.0mm
Active Area	24.3mm x 21.2mm
Pixel Pitch	190um x 190um
Pixel Size	175um x 175um
Backlight System	LED
Driver Attach	Chip on Glass (COG)
Display Type	STN, FSTN
Duty	1/112
Bias	1/11



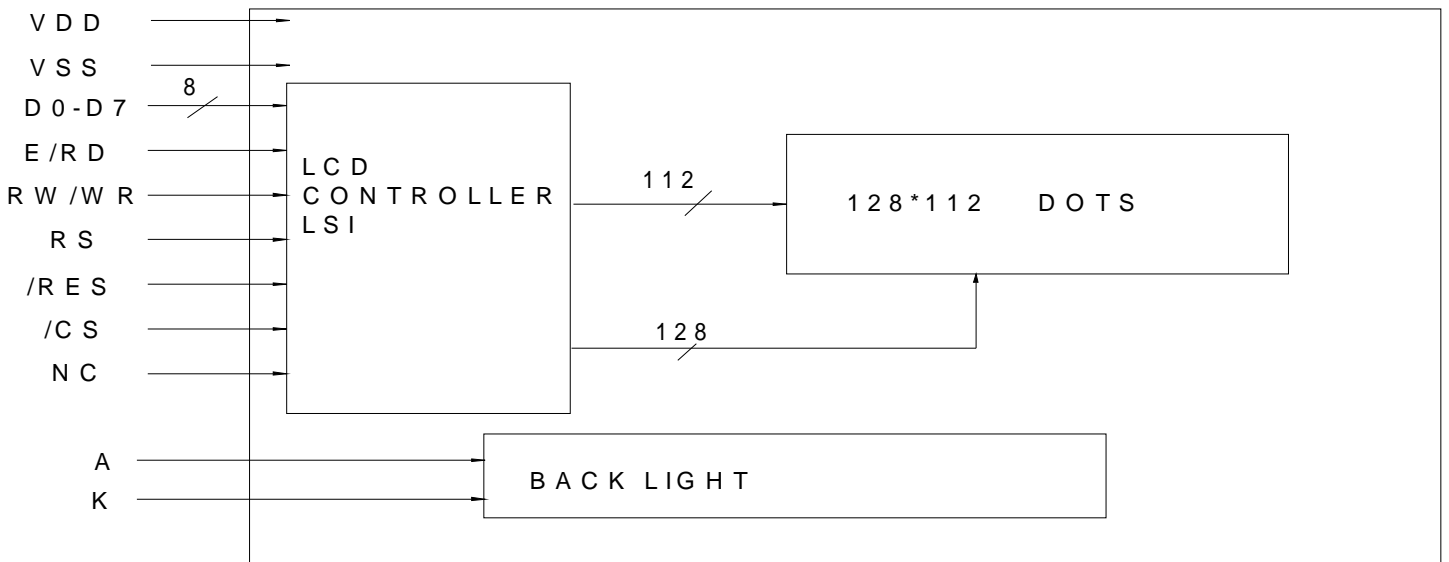
G-12811205G -VB

1/112 DUTY,1/11 BIAS
128×112DOTS

1.0 DIMENSIONAL DRAWING



2.0 BLOCK DIAGRAM



3.0 ELECTRICAL CHARACTERISTICS (Ta=25 °C, VDD=5.0V±10%)

Item	Symbol	Test Condition	Standard Value			
			Min.	Typ.	Max.	Unit
Power Supply Voltage (Logic)	V _{DD}	25°C	1.7	3.0	3.3	V
LCD Operation Voltage	V _{OP(FSTN)}		--	13.5	--	V
LCM Current Consumption	I _{DD}		--	--	1.0	mA
Backlight Forward Voltage	V _F		--	9.3	--	V

4.0 ABSOLUTE MAXIMUM RATINGS

Item	Symbol	Test Condition	Standard Value		
			Min.	Max.	Unit
Supply Voltage (Logic)	$V_{DD}-V_{SS}$	25°C	-0.5	5.0	V
Supply Voltage (LCD)	$V_{DD}-V_{O}$		-0.5	15	V
Input Voltage	V_{IN}		-0.5	VDD+0.5	V
Operating Temp.	T_{OPR}		-20	70	°C
Storage Temp.	T_{STG}		-30	80	°C

5. PIN ASSIGNMENT

Pin No.	Symbol	Level	Function
1	VSS	0V	Ground
2	VDD	+3V	Power supply for logic
3~10	DB0~DB7	H/L	Data bit0~Data bit7
11	E/RD	H	Enable signal
12	RW/WR	H/L	Read/Write selection H: Read L:Write
13	RS	H/L	Register selection H:Display data L:Control data
14	/RES		When /RES is "L", initialization is executed
15	/CS		This is the chip select signal. High active.
16	NC		No connector

Remark:

1. LCD option: TN,STN, FSTN .
2. Customized module.