

*Phoenix Display International, Inc.*

# PRODUCT PREVIEW

## 160 x 32 Monochrome

**TN/STN**

Graphics  
Liquid Crystal Display

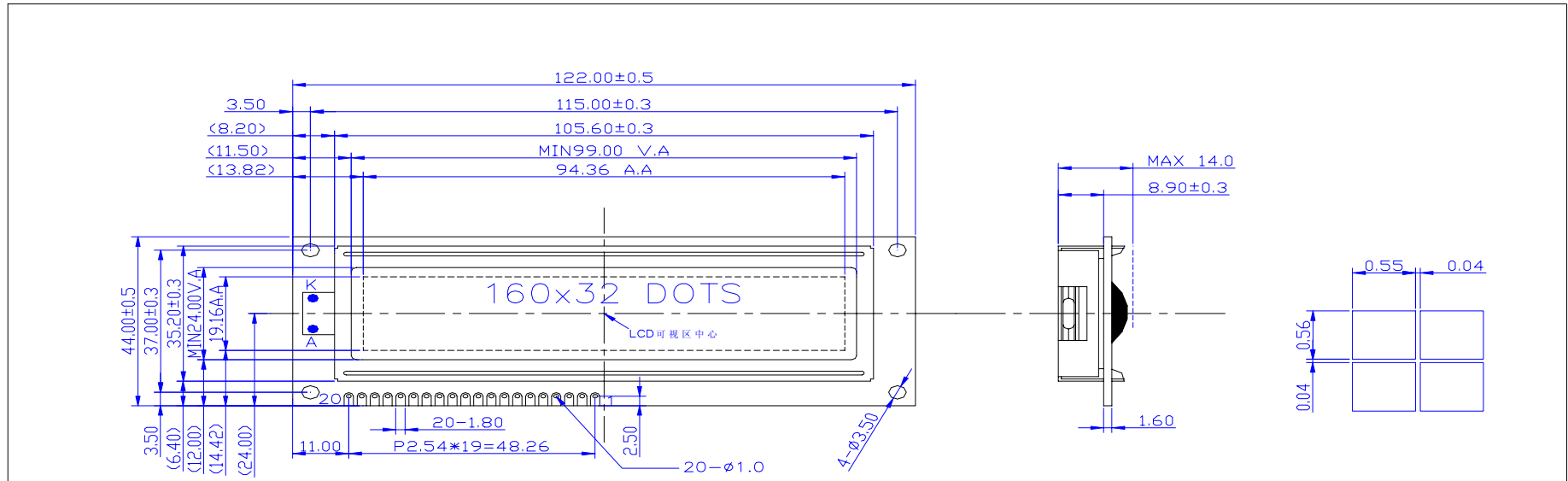
### SPECIFICATIONS

#### MODULE

Part Number	G-1603202C-VA
Format	160 Columns by 32 Rows
Controller	STN7920, ST7921
Overall Dimensions	122.0mm x 44.0mm x 2.8mm
Active Area	48.0mm x 24.3mm
Pixel Pitch	500um x 510um
Pixel Size	480um x 490um
Backlight System	LED
Driver Attach	Chip on Board (COB)
Display Type	STN, FSTN
Duty	1/32
Bias	1/5

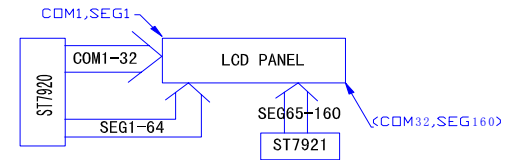


# LCM OUTLINE



**NOTE:**

1. STN,Y/G,POSITIVE,TRANSFLECTIVE
2. 1/32 DUTY, 1/5BIAS,Vop.=6.0V,Vdd=5.0V,IDD MAX5.0mA
3. V.D:6:00
4. OP.TEMP:-20°C-70°C
5. ST.TEMP:-30°C-80°C
6. LCD CONTROLLER: ST7920
7. BACKLIGHT:LED,Y/G,4.2V,<240mA,568±5nm,80CD/m<sup>2</sup>
8. LCD DRAWING NO.: JY05A36



PIN NO.	1	2	3	4	5	6	7-14	15	16	17	18	19	20
SYMBOL	VSS	VDD	NC	RS	R/W	E	D0-D7	PSB	NC	/RST	NC	LED-	LED+

更改记录					设计	审核	工艺	标准化	批准	产品型号	JYG-1603202C-YS6L2-VA		
更改标记	日期	更改内容	设计	审核	批准	签名	邹议晨			文件编号	G1603202C-WX		
						日期	05.03.07			分文件号	4		
										页数	1-1	单位	mm
						未注公差	±0.2			冀雅(廊坊)电子有限公司			