

PRODUCT PREVIEW

320x 240 Monochrome

TN/STN

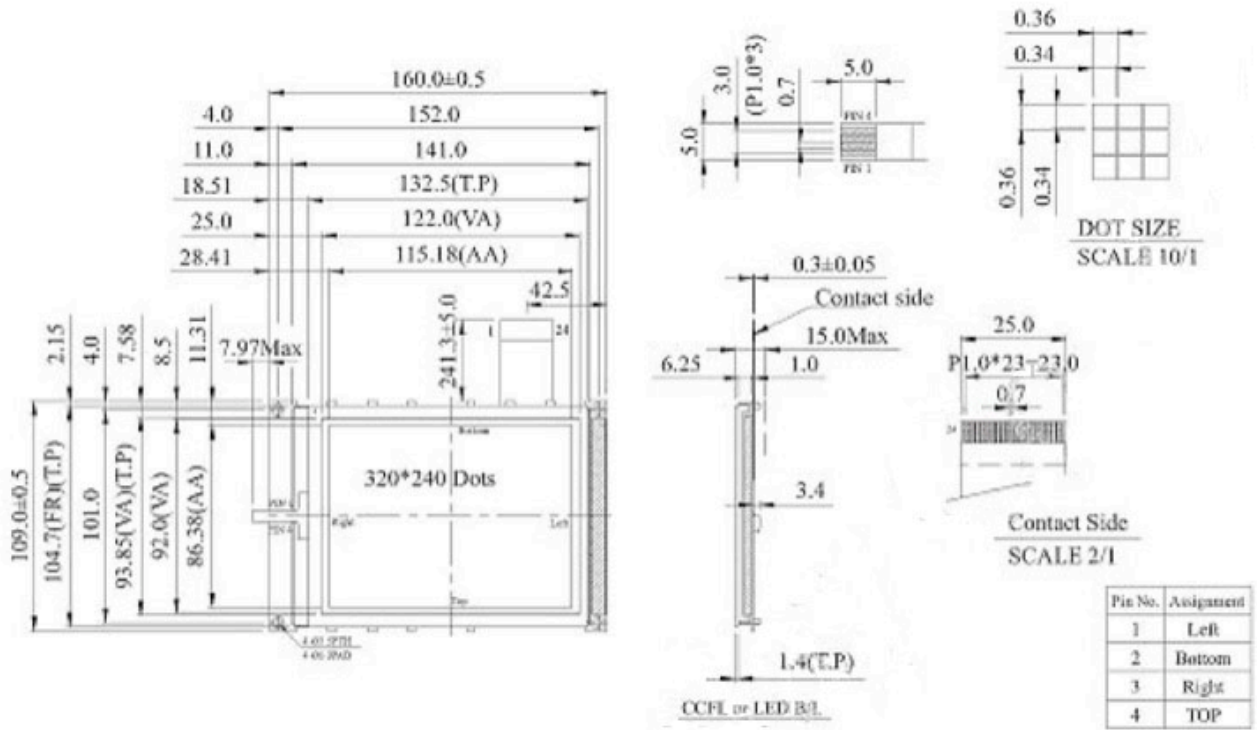
Graphics
Liquid Crystal Display

SPECIFICATIONS

MODULE

Part Number	PDI320240L-TFH-VZ
Display Format	320 x 240 Graphic Display
Module Size	160.0 x 129.0 x 13.0
Diagonal	5.70
Active Area	115.2 x 86.4
Pixel Pitch	0.360 x 0.360
Backlight System	LED
Display Type	R,TF,TM
Glass Type	STN,FSTN

1.0 DIMENSIONAL DRAWING



Phoenix Display International reserves the right to change this document without prior notice and disclaims all warranties. It is the recipient's duty to confirm with PDI before proceeding with a design. This document is PDI confidential and should not be reproduced without PDI approval.



3.0 ELECTRICAL CHARACTERISTICS

Standard Value

Item	Symbol	Condition (degrees C)	min.	typ.	max.	Unit
Input Voltage	VDD	---	---	5.0	---	V
Supply Current	IDD	VDD=5V	---	7.5	---	mA
Recommended LC Driving Voltage for Normal Temp. Version Module	VDD-V0	-20	---	---	23.8	V
Recommended LC Driving Voltage for Normal Temp. Version Module	VDD-V0	25	---	23.8	---	V
Recommended LC Driving Voltage for Normal Temp. Version Module	VDD-V0	70	20.9	---	---	V
CCFL Starting Voltage	VFLS	25	---	---	---	Vrms
CCFL Driving Voltage	VFLD	25	---	---	---	Vrms
CCFL Driving Current	IFLD	VFQ=450Vms 300KHZ	---	---	---	mAms
LED Forward Voltage	VF	25	---	3.5	---	V
LED Forward Current	IF	25	---	140	160	mA
EL Power Supply Current	IEF	Vel=110AC;400Hz	---	---	5.0	mA

4.0 ABSOLUTE MAXIMUM RATINGS

Item	Symbol	Standard Value			Unit
		min.	typ.	max.	
Power Supply	VDD-VSS	4.75	5	5.5	V
Input Voltage	VI	-0.3	---	VDD	V

5.0 PIN ASSIGNMENT

Pin No.	Symbol	Pin No.	Symbol
1-4	DB0-3	14	FGND
5	DISPOFF	15	X1
6	FLM	16	X2
7	NC	17	Y1
8	LP	18	Y2
9	CP	19	NC
10	VDD	20	A
11	VSS	21	K
12	VEE	22-24	NC
13	F0		

