

Phoenix Display International, Inc.

PRODUCT PREVIEW

128 x 112 Monochrome

SPECIFICATIONS

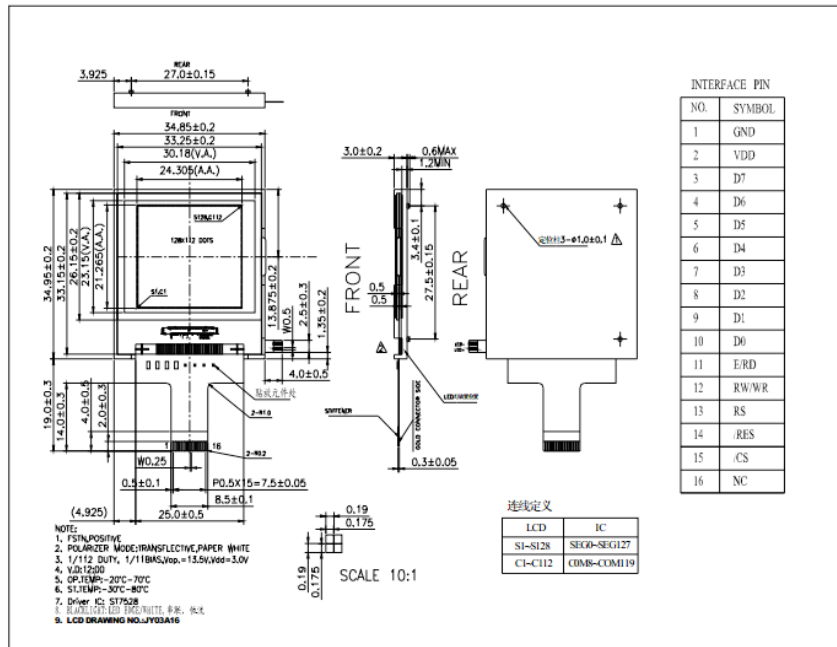
TN/STN

Graphics
Liquid Crystal Display

MODULE

Part Number	G-12811205G-VB
Format	128 Columns by 112 Rows
Controller	ST7528
Overall Dimensions	34.9mm x 35.0mm x 3.0mm
Active Area	30.2mm x 23.2mm
Pixel Pitch	190um x 190um
Pixel Size	175um x 175um
Backlight System	LED
Driver Attach	Chip on Glass (COG)
Glass Type	STN, FSTN
Display Type	R,TF,TM
Duty	1/112

1.0 DIMENSIONAL DRAWING



Phoenix Display International reserves the right to change this document without prior notice and disclaims all warranties. It is the recipient's duty to confirm with PDI before proceeding with a design. This document is PDI confidential and should not be reproduced without PDI approval.

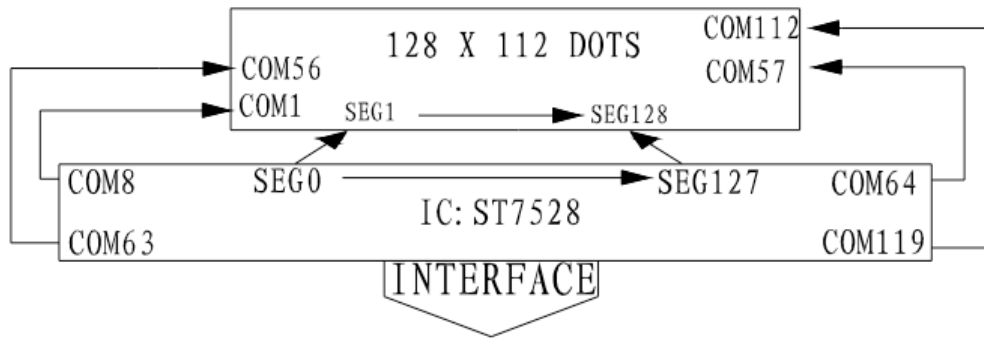


Phoenix Display International, Inc.
www.phoenixdisplay.com sales@phoenixdisplay.com
 Tel: (630) 359-5700 or (480) 775-6315

PRODUCT PREVIEW

128 x 112 Monochrome

2.0 BLOCK DIAGRAM



3.0 ELECTRICAL CHARACTERISTICS Ta=25 °C VDD=3.0V±0.25V

Item	Symbol	Test Condition	Standard Value			
			Min.	Typ.	Max.	Unit
Power Supply for Logic	VDD	25°C	2.9	3.0	3.1	V
LCD Operation Voltage	Vop.	25°C	13.3	13.5	13.7	V
LCM Current Consumption	Idd	25°C	-	-	2	mA

4.0 ABSOLUTE MAXIMUM RATINGS

Item	Symbol	Standard Value			Unit
		Min.	Max.		
Power Supply for Logic	VDD	-0.5	3.6		V
LCD Operation Voltage	Vo.	-0.5	15		V
Input Voltage	Vin	-0.5	Vdd+0.5		V
Operating Temp	Top.	-20	70		°C
Storage Temp	Tst.	-30	80		°C

5.0 PIN ASSIGNMENT

Pin No.	Symbol	Description
1	GND	GROUND
2	VDD	+3.0V POWER SUPPLY
3~10	D7~D0	DATA BUS
11	E/RD	H: ENABLE; L: DISENABLE
12	RW/WR	H: READ; L: WRITE
13	RS	H: DATA; L: CONTROL
14	/RES	L: RESET;
15	/CS	L: CHIP SELECTED
16	NC	OPEN

Remark

1. LCD option: STN, FSTN .
2. Customized module.
3. Backlight option: EL backlight feature, other specs not available on catalog is under request.

